



October 1997

EMBARGO: 11:30 AM (CANBERRA TIME) FRI 12 DEC 1997

# **Lease Finance**

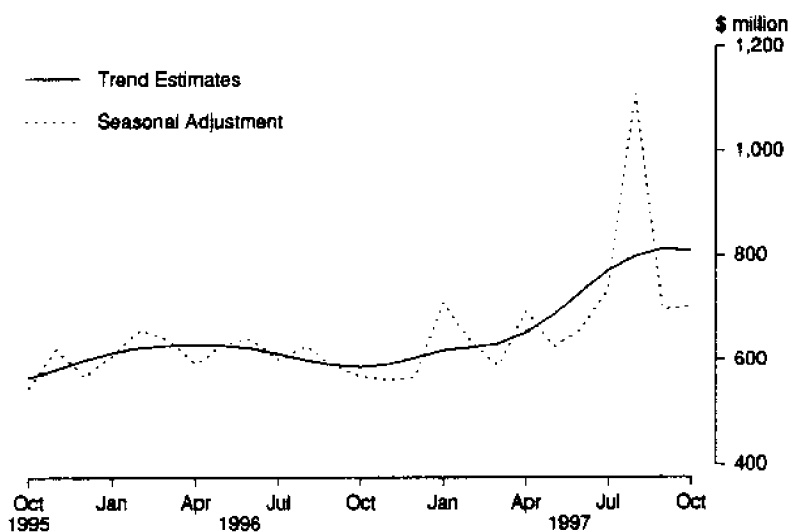
## **Australia**

## **Data Report**

© Commonwealth of Australia 1997

## MAIN FEATURES

### LEASE FINANCE, AUSTRALIA, OCTOBER 1995 - OCTOBER 1997



1 The provisional trend estimate for lease finance commitments made by significant lenders in October 1997 was \$809.9 million, a decrease of \$2.8 million (0.3%) on September 1997, but an increase of \$223.5 million (38.1%) on October 1996.

2 Seasonally adjusted, lease finance commitments were \$704.3 million in October 1997, an increase of \$5.6 million (0.8%) on September 1997 and an increase of \$135.7 million (23.9%) on October 1996.

3 In original terms lease finance commitments in October 1997 were \$702.6 million, an increase of \$27.1 million (4.0%) on September 1997 and an increase of \$141.1 million (25.1%) on October 1996.

---

#### INQUIRIES

- for further information about these and related statistics, contact Greg Smith on (02) 9268 4537 or email at [greg.smith@abs.gov.au](mailto:greg.smith@abs.gov.au).
  - for information about other ABS statistics and services please refer to the back cover.
-

**LEASE FINANCE COMMITMENTS: SUMMARY OF MOVEMENTS IN MAJOR AGGREGATES: Original, seasonally adjusted and trend estimates, OCTOBER 1997**

Month	Value			Change from previous month			Change from corresponding month of previous year		
	Original \$ million	Seasonally adjusted \$ million	Trend \$ million	Original %	Seasonally adjusted %	Trend %	Original %	Seasonally adjusted %	Trend %
<b>1996 ---</b>									
August	590.7	628.4	599.0	-16.2	4.8	-2.1	13.8	20.0	9.0
September	534.3	588.4	590.1	-9.5	-6.4	-1.5	-0.7	6.0	6.1
October	561.5	568.6	586.4	5.1	-3.4	-0.6	9.6	3.9	3.4
November	530.4	561.8	591.4	-5.5	-1.2	0.9	-9.2	-9.5	1.6
December	595.1	568.6	604.5	12.2	1.2	2.2	-0.8	0.1	0.8
<b>1997 —</b>									
January	520.8	711.0	619.1	-12.5	25.1	2.4	16.9	16.9	0.8
February	541.4	636.0	624.2	4.0	-10.6	0.8	-3.4	-3.4	0.0
March	547.7	587.7	631.7	1.2	-7.6	1.2	-13.8	-8.2	0.5
April	674.0	692.9	652.5	23.1	17.9	3.3	23.2	17.2	3.6
May	654.4	626.2	687.4	-2.9	-9.6	5.4	-7.1	-1.0	9.4
June	924.0	659.7	730.4	41.2	5.4	6.3	5.6	3.1	17.2
July	858.1	736.8	771.8	-7.1	11.7	5.7	21.8	22.9	26.1
August	1 035.9	1 108.6	799.7	20.7	50.5	3.6	75.3	76.4	33.5
September	675.5	698.7	812.7	-34.8	-37.0	1.6	26.4	18.7	37.7
October	702.6	704.3	809.9	4.0	0.8	-0.3	25.1	23.9	38.1

TABLE 1 — VALUE OF GOODS UNDER NEW FINANCE LEASE COMMITMENTS(a) — OCTOBER 1997  
(S million)

Type of goods	Type of lessor				Total
	All banks	Finance companies	General financiers	Other lessors(b)	
<b>AUSTRALIA</b>					
Motor vehicles —					
Motor cars					
New					
Not subject to depreciation limit	61.0	118.2	23.4	1.4	203.9
Subject to depreciation limit	3.2	1.1	11.0	0.1	15.4
Used					
Not subject to depreciation limit	19.5	34.9	5.1	0.4	59.9
Subject to depreciation limit	0.9	0.2	9.1	—	10.1
Light trucks					
New	10.4	18.6	0.7	0.7	30.5
Used	3.8	5.3	0.4	—	9.4
Heavy trucks					
New	14.1	22.3	5.3	—	41.6
Used	2.5	10.9	0.4	0.5	14.3
Other motor vehicles					
Motor buses/coaches	1.5	3.7	0.2	—	5.4
Other	2.2	0.5	0.3	—	3.0
Trailers	3.4	3.6	0.2	—	7.2
Other transport equipment	9.0	3.7	1.1	—	13.8
Construction and earthmoving equipment	16.8	15.9	10.7	0.7	44.0
Manufacturing equipment	18.6	9.9	6.9	1.1	36.6
Agricultural machinery and equipment	19.3	8.7	12.3	—	40.3
Electronic data processing equipment	16.3	9.1	23.0	1.5	49.9
Office machines	8.3	4.1	24.0	18.6	54.9
Shop and office furniture, fittings and equipment	10.9	6.7	7.7	0.5	25.8
Other	25.9	6.8	3.5	0.1	36.3
<b>Total</b>	<b>247.5</b>	<b>284.1</b>	<b>145.2</b>	<b>25.7</b>	<b>702.6</b>
<b>STATES(c)</b>					
New South Wales	109.0	129.0	63.8	15.1	316.9
Victoria	48.1	47.4	37.8	10.3	143.7
Queensland	67.9	77.5	24.8	0.1	170.3
South Australia	6.4	7.1	n.p.	n.p.	21.6
Western Australia	12.3	14.9	7.4	—	34.6
Tasmania	0.3	2.6	n.p.	n.p.	3.8
Northern Territory	0.1	1.3	0.8	—	2.3
Australian Capital Territory	3.3	4.2	1.8	—	9.4

(a) Excludes leveraged leases. (b) From July 1997 Money market corporations are included in the category Other lessors. (c) From July 1997 General financiers and Other lessors data is not available for publication for South Australia and Tasmania.

TABLE 2 — VALUE OF GOODS UNDER NEW FINANCE LEASE COMMITMENTS (a) — ALL LESSORS

	Type of goods														Total motor vehicles		
	Motor cars and station wagons				Light trucks				Heavy trucks				Other motor vehicles (b)				
	New		Used		New		Used		New		Used		New			Used	
	Number	\$m	Number	\$m	Number	\$m	Number	\$m	Number	\$m	Number	\$m	Number	\$m		Number	\$m
AUSTRALIA																	
YEARS																	
1994-1995	60,792	2,244.9	19,511	586.5	10,567	334.7	3,632	83.3	2,772	365.7	1,963	119.1	119.1	136.6	3,870.7		
1995-1996	62,256	2,262.6	24,664	722.5	10,076	332.6	4,319	110.5	2,338	298.8	2,332	150.2	150.2	208.8	4,085.9		
1996-1997	65,494	2,232.0	26,592	732.5	10,730	357.0	4,467	112.8	2,411	308.5	2,224	141.8	141.8	191.8	4,076.5		
1996	4,927	178.3	2,124	61.4	818	25.8	359	9.0	203	24.6	239	16.2	16.2	14.5	329.8		
September	4,629	156.7	1,890	51.2	721	25.5	329	7.8	184	26.3	205	13.5	13.5	16.8	297.9		
October	5,082	172.5	1,934	52.0	707	24.9	360	9.3	158	19.3	225	14.2	14.2	16.1	308.3		
November	4,970	168.7	1,963	54.9	654	22.5	312	8.1	199	25.8	157	10.7	10.7	11.3	302.2		
December	5,547	181.7	2,332	52.8	778	28.1	336	8.3	196	25.6	151	11.2	11.2	16.7	324.4		
1997	4,944	148.2	2,109	58.6	719	22.8	316	7.7	127	21.3	163	8.2	8.2	13.8	280.6		
January	4,843	167.6	2,075	57.1	811	26.5	336	8.7	147	19.9	143	8.9	8.9	12.5	301.2		
February	5,139	169.9	2,043	56.7	820	26.5	349	9.0	180	22.8	116	7.4	7.4	13.7	305.9		
March	6,054	198.2	2,326	65.2	1,023	34.0	351	8.4	228	28.3	185	14.6	14.6	14.1	362.8		
April	5,623	197.9	2,279	64.8	1,034	34.9	405	10.9	270	31.7	176	11.3	11.3	19.2	370.7		
May	7,148	251.8	3,010	84.5	1,528	49.2	575	14.5	304	36.1	193	11.5	11.5	28.8	476.3		
June	7,232	227.6	2,906	79.2	1,409	45.9	474	11.7	221	32.8	204	12.4	12.4	15.6	425.0		
July	5,390	182.1	18,840	473.5	918	29.3	320	8.1	197	24.3	157	10.2	10.2	19.4	746.9		
August	5,924	200.1	2,739	74.8	966	32.0	403	10.3	277	31.0	254	24.3	24.3	16.3	388.8		
September	6,460	219.4	2,578	70.0	833	30.5	378	9.4	251	41.6	174	14.3	14.3	15.6	400.8		
October																	
STATES — SEPTEMBER 1997																	
NSW	2,815	97.8	1,311	36.5	332	11.9	190	5.0	117	11.3	63	5.0	5.0	5.5	173.0		
Vic.	1,348	44.0	528	14.4	130	4.3	32	0.7	34	5.4	58	5.3	5.3	4.6	78.8		
Qld	1,273	42.8	590	16.2	405	13.1	141	3.6	113	12.0	118	11.9	11.9	5.3	104.9		
SA	134	4.4	102	2.2	22	0.6	19	0.4	5	1.0	3	0.9	0.9	0.2	9.7		
WA	183	5.6	111	3.1	42	1.1	9	0.2	5	0.8	8	0.7	0.7	0.5	12.2		
Tas.	33	0.9	41	0.8	3	0.1	5	0.1	—	—	2	0.2	0.2	—	2.2		
NT	26	1.0	16	0.5	13	0.4	2	0.1	1	0.1	1	—	—	0.1	2.1		
ACT	112	3.6	40	1.1	19	0.6	5	0.1	2	0.3	1	0.1	0.1	—	5.9		
STATES — OCTOBER 1997																	
NSW	3,327	114.2	1,185	32.6	297	12.3	147	3.7	91	13.8	51	4.1	4.1	4.9	185.6		
Vic.	1,342	44.1	496	13.4	153	5.4	54	1.3	71	11.4	17	1.8	1.8	4.0	81.3		
Qld	1,253	43.5	628	17.2	315	10.4	146	3.8	67	9.8	95	7.6	7.6	5.7	97.9		
SA	149	4.7	108	2.4	20	0.6	9	0.2	8	4.4	2	0.2	0.2	0.5	13.0		
WA	236	7.4	94	2.6	23	1.1	5	0.1	5	0.9	7	0.5	0.5	0.4	13.1		
Tas.	30	1.0	25	0.6	1	—	6	0.1	3	0.5	—	—	—	—	2.2		
NT	19	0.7	7	0.2	8	0.2	7	0.1	2	0.2	1	—	—	—	1.5		
ACT	104	3.7	35	1.0	16	0.5	4	0.1	4	0.7	1	0.1	0.1	0.1	6.1		

(a) Excludes leveraged leases. (b) Includes trailers.

TABLE 2 — VALUE OF GOODS UNDER NEW FINANCE LEASE COMMITMENTS(a) — ALL LESSORS — continued  
(\$ million)

YEARS	Type of goods							Total finance lease commitments			Commitments not drawn at end of period	
	Other transport equipment	Construction and earthmoving equipment	Agricultural machinery and equipment	Manufacturing equipment	Electronic data processing equipment	Shop and office furniture, fittings and equipment		Original	Seasonally Adjusted	Trend Estimates		
						Office machines	Other					
AUSTRALIA												
1994-1995	121.4	325.2	243.5	425.9	622.1	366.0	250.6	238.0	6,463.4	..	..	495.5
1995-1996	129.3	352.4	396.0	482.3	659.7	461.7	260.4	279.7	7,107.3	..	..	475.0
1996-1997	139.8	366.1	489.8	526.8	627.1	512.1	278.0	362.6	7,378.9	..	..	437.7
1996	9.2	25.3	19.9	51.5	56.3	41.8	18.9	37.9	590.7	628.4	599.0	443.9
August	12.0	27.4	24.1	30.7	43.3	50.7	19.4	29.0	534.3	588.4	590.1	446.7
September	10.2	22.9	33.0	41.6	56.9	38.6	24.5	25.4	561.5	568.6	586.4	448.6
October	8.3	32.8	28.8	34.8	40.0	40.7	19.7	23.2	530.4	561.8	591.4	406.7
November	8.0	34.4	24.3	50.1	55.0	43.0	30.1	25.9	595.1	568.6	604.5	324.1
December	14.4	23.2	32.5	31.5	61.2	35.5	22.8	19.1	520.8	711.0	619.1	332.9
1997	7.7	30.2	30.8	41.1	42.7	35.7	20.2	31.9	541.4	636.0	624.2	441.3
January	12.5	20.4	42.7	35.6	49.7	38.3	20.4	22.1	547.7	587.7	631.7	345.3
February	10.7	32.0	52.4	42.4	58.0	47.6	25.9	42.2	674.0	692.9	652.5	367.8
March	8.0	34.5	52.9	43.2	45.4	46.4	23.9	29.5	626.2	687.4	687.4	400.1
April	19.7	47.4	107.1	80.6	72.2	48.9	30.3	41.5	924.0	659.7	730.4	437.7
May	11.0	31.0	34.0	74.3	168.6	51.7	23.0	39.5	858.1	736.8	771.8	392.7
June	16.4	33.3	26.2	51.3	48.4	53.7	18.7	40.8	1,035.9	1,108.6	799.7	748.6
July	12.6	27.2	28.0	32.6	58.5	75.3	23.4	29.1	675.5	698.7	812.7	423.3
August	13.8	44.0	40.3	36.6	49.9	54.9	25.8	36.3	702.6	704.3	809.9	323.9
September	8.0	7.7	7.1	9.3	29.7	33.3	9.3	15.7	293.0	n.a.	n.a.	197.6
October	2.2	6.5	4.3	14.8	15.8	23.2	5.7	3.7	155.0	n.a.	n.a.	168.3
NSW	1.2	9.6	13.3	7.0	5.7	8.3	6.3	8.1	164.3	n.a.	n.a.	42.9
Vic.	0.9	1.1	0.5	0.4	1.1	7.3	0.5	0.4	21.7	n.a.	n.a.	2.0
Qld	0.3	1.6	2.3	0.8	4.0	2.4	0.7	0.3	24.7	n.a.	n.a.	11.3
SA	—	0.3	0.1	0.1	1.2	0.1	—	0.3	4.3	n.a.	n.a.	—
WA	—	0.1	—	0.2	0.4	—	0.1	—	3.0	n.a.	n.a.	0.1
Tas.	0.1	0.3	0.4	0.1	0.7	0.7	0.8	0.5	9.5	n.a.	n.a.	1.1
NT	—	—	—	—	—	—	—	—	—	—	—	—
ACT	0.1	0.3	0.4	0.1	0.7	0.7	0.8	0.5	9.5	n.a.	n.a.	1.1
STATES — SEPTEMBER 1997												
STATES — OCTOBER 1997												
NSW	9.2	17.3	15.2	8.9	25.6	24.8	11.8	18.5	316.9	n.a.	n.a.	176.1
Vic.	1.7	4.7	3.3	15.1	12.1	18.2	2.8	4.5	143.7	n.a.	n.a.	89.0
Qld	1.7	11.7	15.9	9.6	5.5	7.7	9.2	11.1	170.3	n.a.	n.a.	44.9
SA	0.2	2.1	0.7	1.2	1.2	1.7	0.5	1.0	21.6	n.a.	n.a.	2.6
WA	1.0	7.0	4.6	1.3	4.4	1.2	1.1	0.9	34.6	n.a.	n.a.	9.9
Tas.	—	0.2	0.1	—	1.0	0.1	—	0.1	3.8	n.a.	n.a.	—
NT	—	0.5	—	0.1	0.1	—	—	—	2.3	n.a.	n.a.	0.1
ACT	0.1	0.5	0.5	0.5	0.2	1.1	0.4	0.1	9.4	n.a.	n.a.	1.3

(a) Excludes leveraged leases.

TABLE 3 — VALUE OF GOODS UNDER NEW FINANCE LEASE COMMITMENTS(a) BY INDUSTRY OF LESSEE — ALL LESSORS  
(\$ million)

YEARS	Agriculture, forestry, fishing and hunting	Mining	Manufacturing	Construction	Wholesale trade	Retail trade	Transport and storage	Finance, investment and insurance	Property and business services	Recreation and other services	Public administration	Community services	Other industries	Total
1994-1995	441.3	159.2	778.1	513.5	297.7	1,267.9	605.8	268.5	846.6	394.9	78.0	397.6	414.3	6,463.3
1995-1996	615.6	177.6	854.6	496.4	325.3	1,128.5	790.5	257.0	923.8	348.3	107.2	376.1	706.4	7,107.3
1996-1997	726.6	195.0	875.0	537.5	297.9	1,003.9	806.1	267.9	1,094.9	348.0	203.9	362.0	660.3	7,378.9
1996	37.0	21.6	78.5	37.1	27.2	80.6	65.5	29.4	82.2	25.4	16.9	29.8	59.5	590.7
August	37.6	22.7	65.5	36.0	18.9	69.7	69.0	24.2	73.8	24.1	14.9	27.4	50.5	534.3
September	47.2	14.4	67.9	35.6	20.8	87.4	65.2	20.0	81.5	22.6	19.0	30.0	50.0	561.5
October	44.3	13.4	66.3	45.7	25.2	78.7	65.7	16.5	70.6	23.0	11.3	26.1	43.5	530.4
November	44.0	25.9	66.0	44.3	22.6	76.3	72.0	15.0	94.8	30.4	20.7	30.3	52.8	595.1
December	43.7	13.6	62.2	37.3	26.9	69.8	56.4	33.9	67.1	27.7	18.3	22.7	41.2	520.8
1997	47.2	12.3	66.1	40.1	19.9	67.0	51.7	19.1	98.5	26.7	16.4	24.8	51.8	541.4
January	60.4	9.2	63.0	40.5	20.5	65.8	57.8	17.5	93.5	25.4	15.1	27.1	51.9	547.7
February	74.8	16.6	71.7	46.5	23.7	88.0	62.2	27.8	104.5	38.7	17.7	43.1	58.8	674.0
March	79.3	12.4	69.7	50.1	29.3	83.6	71.4	20.1	97.0	34.7	14.3	32.8	59.7	654.4
April	149.0	18.6	117.3	72.4	29.7	109.5	92.1	22.8	142.6	39.6	24.1	39.1	67.1	924.0
May	62.7	18.4	85.8	55.0	25.8	104.0	66.4	24.4	118.0	36.3	16.8	33.3	211.2	858.1
June	41.3	23.6	67.9	41.7	22.5	100.0	66.5	16.0	115.8	32.5	428.0	31.5	48.6	1,035.9
July	47.8	11.9	67.7	47.8	27.0	106.5	85.8	24.4	115.6	34.7	19.0	30.4	56.9	675.5
August	62.8	23.2	58.0	66.7	24.9	98.4	75.6	30.1	105.5	39.9	17.5	27.7	72.2	702.6
September	10.9	3.8	25.5	14.8	12.9	59.8	28.1	14.1	54.7	16.1	8.9	13.7	29.7	293.1
October	6.9	3.6	25.5	8.4	5.6	21.0	25.9	4.9	28.9	3.3	3.5	6.4	11.0	155.0
NSW	23.3	2.4	11.6	18.6	5.8	17.6	26.4	3.4	24.7	9.6	1.7	7.4	11.9	164.3
Vic.	1.2	0.6	2.1	3.0	0.6	3.7	2.5	0.9	1.6	0.9	1.6	1.6	1.4	21.7
Qld	3.6	1.3	2.2	1.5	1.7	2.7	1.4	0.9	2.5	3.7	1.3	0.6	1.4	24.7
SA	0.8	—	0.2	0.6	0.1	0.4	0.2	0.1	0.3	0.2	1.0	0.1	0.4	4.3
WA	0.1	0.2	0.1	0.3	0.1	0.2	0.5	—	0.5	0.3	0.3	0.1	0.3	3.0
Tas.	1.0	0.4	0.4	0.6	0.3	1.1	0.9	0.1	2.5	0.6	0.7	0.6	0.9	9.5
NT	—	—	—	—	—	—	—	—	—	—	—	—	—	—
ACT	—	—	—	—	—	—	—	—	—	—	—	—	—	—
STATES — SEPTEMBER 1997														
NSW	21.0	11.3	23.3	26.2	10.8	59.8	28.6	20.9	48.0	15.8	8.2	9.9	33.1	316.9
Vic.	7.5	3.0	18.5	8.5	6.8	16.8	19.6	3.6	23.8	4.1	3.2	7.3	21.0	143.7
Qld	24.4	2.5	12.3	20.8	4.9	15.4	21.6	3.7	25.3	14.5	2.9	7.8	14.1	170.3
SA	1.7	0.2	2.1	6.4	0.5	1.6	2.1	0.9	1.5	1.0	0.8	1.5	1.2	21.6
WA	7.0	6.0	1.0	2.7	1.1	3.1	1.7	0.7	4.8	3.3	0.8	0.8	1.6	34.6
Tas.	0.3	0.1	0.1	0.6	0.1	0.4	0.3	0.1	0.4	0.3	0.7	0.2	0.1	3.8
NT	—	—	—	0.5	0.2	0.3	0.3	—	0.2	0.2	0.1	—	0.3	2.3
ACT	0.9	—	0.7	0.8	0.5	0.9	1.4	0.1	1.5	0.6	0.9	0.3	0.7	9.4

(a) Excludes leveraged leases.







## For more information . . .

The ABS publishes a wide range of statistics and other information on Australia's economic and social conditions. Details of what is available in various publications and other products can be found in the ABS Catalogue of Publications and Products available from all ABS Offices.

### ABS Products and Services

Many standard products are available from ABS bookshops located in each State and Territory. In addition to these products, information tailored to the needs of clients can be obtained on a wide range of media by contacting your nearest ABS Office. The ABS also provides a Subscription Service for standard products and some tailored information services.

### National Dial-a-Statistic Line

0055 86 400

*Steadycorn P/L: premium rate 25c/21.4 secs.*

This number gives 24-hour access, 365 days a year, for a range of important economic statistics including the CPI.

### Internet

<http://www.abs.gov.au>

A wide range of ABS information is available via the Internet, with basic statistics available for each State, Territory and Australia. We also have Key National Indicators, ABS product release details and other information of general interest.

## Sales and Inquiries

Keylink STAT.INFO/ABS  
X.400 (C:Australia,PUB:Telememo,O:ABS,FN:STAT,SN:INFO)  
Internet [stat.info@abs.telememo.au](mailto:stat.info@abs.telememo.au)

National Mail Order Service (06) 252 5249  
Subscription Service 1300 366 323

	Information Inquiries	Bookshop Sales
SYDNEY	(02) 9268 4611	9268 4620
MELBOURNE	(03) 9615 7755	9615 7755
BRISBANE	(07) 3222 6351	3222 6350
PERTH	(08) 9360 5140	9360 5307
ADELAIDE	(08) 8237 7100	8237 7582
HOBART	(03) 6220 5800	6220 5800
CANBERRA	(06) 252 6627	207 0326
DARWIN	(08) 8943 2111	8943 2111

Information Services, ABS, PO Box 796, Sydney NSW 2001

